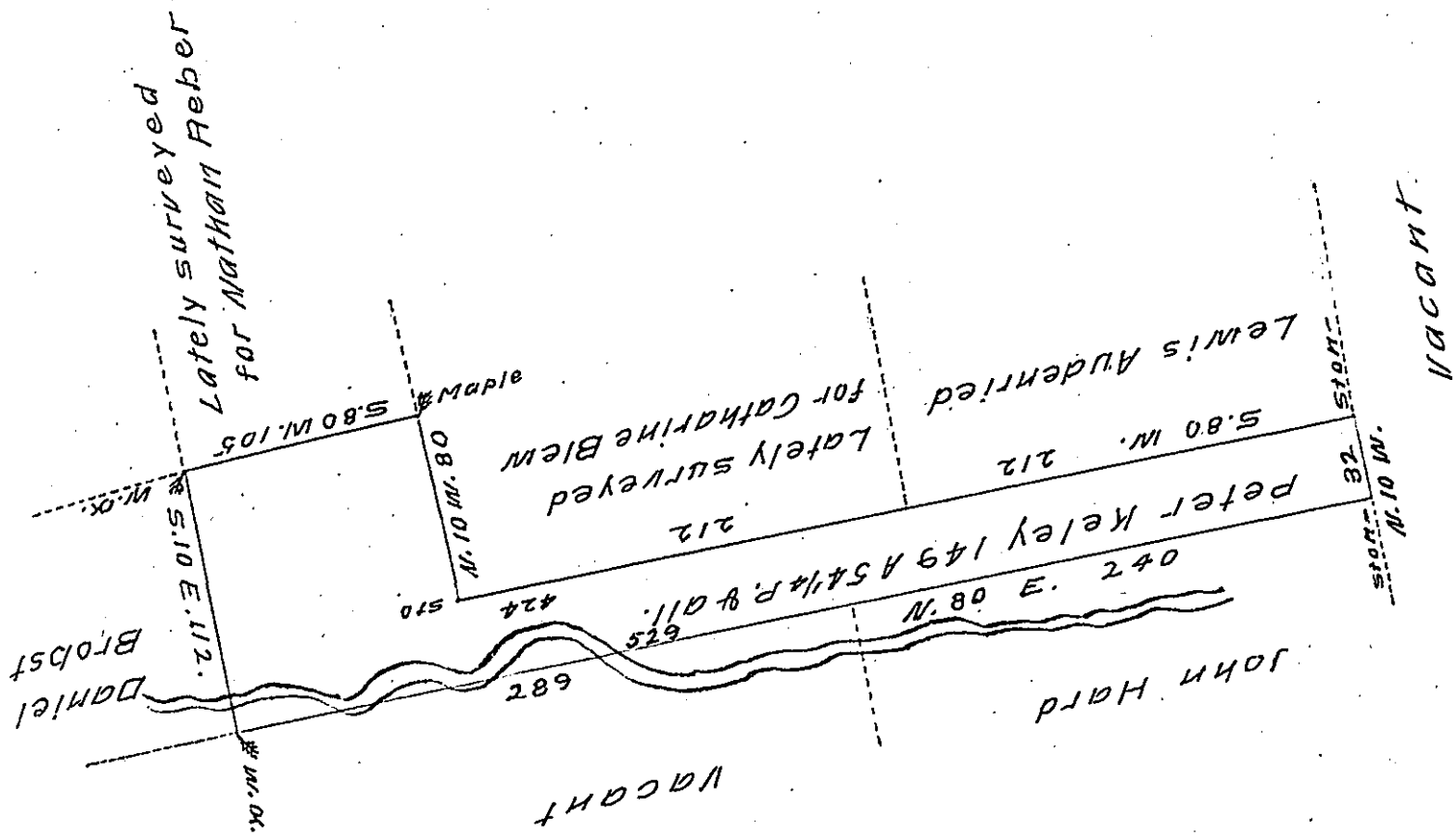


FORM No. 1.



Situate in Rush township Schuylkill County containing
 one hundred and forty ^{nine} acres and fifty four and one fourth
 perches and the allowance of six per cent for Roads —
 surveyed on the 29th day of January 1830 unto Peter
 Keley by virtue of a warrant granted him dated the 20th
 day of January 1830 By

George Reber D.S.

To Gabriel Hiester Esquire
 Surveyor General of Pennsylv^a.

IN TESTIMONY that the above is a copy of the original remaining on file in
 the Department of Internal Affairs of Pennsylvania, made
 conformably to an Act of Assembly approved the 16th day of
 February 1833, I have hereunto set my hand and caused
 the Seal of said Department to be affixed at Harrisburg,
 this Fourteenth day of January 1908

Henry Houder
 Secretary of Internal Affairs.